



St Mary Magdalene C of E School

Peninsula

Spring Term 2024 - Newsletter 1



Headteacher's Message

Dear Parents, Carers and Children,

A very warm welcome back to you all.

May God be with you throughout the year, and give you what you need as parents. Best New Year wishes to you.

We have started the year thinking about how Jesus is a gift to us, and how we can live as the wise men and continue to share the news of Jesus being a special gift to us all. The children and staff have been thinking about their own special gifts and shared them in our first collective worship of the year. It was very special to hear how our school community want to serve and support others. The children and staff shared how they will share their gifts of forgiveness, kindness, positivity and help each other to be better.

This week we will continue to think about the positive differences we made to others over the last year and use these experiences to help us to continue serving others, show resilience, and motivate ourselves and those around us.

As we progress through the term, and head into Easter, we will give thanks for all that we have and continue to be kind, generous and love and care for each other.

God bless you and your families.

Mrs Savva-Brown



Federation Staff Development Meeting

- Wednesday 17th January
- Thursday 25th April

It will be an early finish – 2.30 pm - for the pupils on these days to enable staff travel to relevant campuses.

Culture Day

- Friday 2nd February. Parents are invited to support across the campus or with your child's class. More information to follow shortly.

Children's mental health awareness week

- 5th – 11th February.

Safer Internet Day

6th February.

Parent Coffee Morning

- 9 am on the last Wednesday of each month 31 January, 28, February, 27 March.

Parent Consultation Evening

- Wednesday 7th February – school closes at 1.30 pm.

Last day of Spring 1 Term

- Friday 9th February – school closes at 3:10pm.

School Opens Spring 2 Term

- Monday 19th February.

Empathy week

- 26th February – 1st March

World Book Day

- Thursday March 7th. Children will dress up as a character from a book. Parents will be invited to read in school with the children.

Year 4 School Journey and STEM week

- 11th – 15th March.

Easter Service

- Tuesday 26th March

Last day of Spring 2 Term

- Thursday 28th March – school closes at 1:15 pm.

After School Clubs

- Look out for further information on clubs in your emails.

INSET DAY

- Friday 28th June

Please see link below to dates for the school term.

<https://www.koinoniafederation.com/page/?title=School+Term+and+Holiday+Dates&pid=280>

This term we will be thinking about **resilience** and **motivation**, and how we can be responsible in our lives.

Please talk to your child/ren about how they can be resilient in school, and how they are keeping motivated and motivating others.





St Mary Magdalene C of E School Peninsula Spring Term 2024 - Newsletter 1



Please see below information about pupil attendance and admissions

Why is regular attendance so important?

Being in school every day that it is open, is important to your child's achievement, wellbeing, and their wider development.

Click on the link below to read about what to do when you child is ill:

<https://www.nhs.uk/live-well/is-my-child-too-ill-for-school/>

On the link below you will find information about attendance that you may find interesting:

<https://educationhub.blog.gov.uk/2022/09/02/back-to-school-week-everything-you-need-to-know-about-school-attendance/>

Attendance is between **97% and 100%**. This means your child is on track for an excellent year. You are ensuring your child's school success and setting them off to a great start, Well done!

Attendance is between **92% and 96.9%**. This is a less than expected level of attendance and school is monitoring your child's absence. Less than 97% attendance **over** the school year indicates that at least two weeks of learning is lost.

Attendance is between **90.1% and 91.9%**. This is worrying: your child has less chance of success and their non-attendance is making it harder for them to progress in their learning and development. Over the school year it indicates at least **four** weeks of lost learning.

Attendance is **90% or below**. This is very worrying: there are serious concerns regarding your child's attendance and they are a persistent absentee. The Education Welfare Service will be involved and you may be **legally prosecuted** if there is no improvement.

OUR SIXTH FORM ADMISSIONS FOR SEPTEMBER 2024 IS OPEN!

If you know anyone who is **currently in Year 11** please share with them the following link where they will be able to apply for a place in our Sixth Form at the Peninsula Campus.

<https://www.koinoniafederation.com/page/?title=Admissions&pid=352>

ARE YOU INTERESTED IN BEING A PARENT GOVERNOR FOR OUR FEDERATION? ARE YOU KEEN TO TAKE ON A VOLUNTEERING ROLE AS A NEW YEAR'S RESOLUTION?

We are looking for **nominations for the role of parent governor** and are keen to hear from parents/ carers who are willing to support our Federation and our vision for excellence.

Parent governors are usually asked to join one committee meeting once every term as well as a full governing body meeting in the evening which is once a term. There are also opportunities to join working parties, school visits and support the recruitment process for teachers.

The deadline for nominations is 31st January and there is a meeting for anyone who is interested at **4.30pm on Tuesday 23rd January**.

If you are interested in attending please contact Ellis Holliday: eholliday@koinoniafederation.com



St Mary Magdalene C of E School Peninsula Spring Term 2024 - Newsletter 1



Healthy meals

We want our children to be fit, healthy, able to learn, and more self-confident.
If we encourage our children to be active and eat healthily they are more likely to grow up healthy.
The below link gives ideas on healthier lunch box recipes that your children will enjoy. Give them a go!
You will also find more information on what school age children need to eat to be healthy.

<https://www.nhs.uk/healthier-families/recipes/healthier-lunchboxes/>
<https://www.bbcgoodfood.com/howto/guide/nutrition-middle-years-5-13-years>



**EVERY DAY
Breakfast Club**
7.30 am - 8.40 am

- Variety of great tasty breakfast foods including a hot breakfast!
- Activities provided for the children
- Amazing price for 70 minutes child care

£6.00 a session or book a block of ten sessions and receive the 11th session free
Not booked? You can turn up on the morning but you must pay £7.50
Ask in the school office for more details



Families Information Service

Free advice and support for families, in Royal Greenwich, with children and young people aged 0-19 (or up to 25 for families with disabled young people).

Contact us for information about:

- Children's Centre services and activities.
- Childcare - including registered childminders, nurseries, pre-schools, breakfast and after school clubs, and holiday play schemes.
- Free early learning sessions for two, three and four year olds.
- Benefits and funds to help pay towards childcare costs.
- Starting at primary school or moving from primary to secondary school.
- Activities and groups for children and young people.
- Registering as a childminder.
- Local and national family support services.

020 8921 6921
fis@royalgreenwich.gov.uk
royalgreenwich.gov.uk/fis





St Mary Magdalene C of E School Peninsula Spring Term 2024 - Newsletter 1



A message from the School Chaplain, Rev Dom

I don't know about you but some things I can adapt to quite quickly and other things take me ages to get my head round.

When the clocks change or the year changes it take me ages to come to terms with it. If something you've ordered on the menu suddenly needs to change, then I am happy to go with the flow. I wonder why that is?

2024 feels like it's going to be one of those years where we see change. Changes in the way we think about our climate. Changes to our parliament with the upcoming election.

Our Year 6s and year 11s and 13s have some obvious changes coming towards them. They will be surrounded by encouragement to work, surrounded by things coming to an end – the lasts of everything, and the firsts of things too.

In all these moments, it is really important that we find things that will still be consistent and feel safe. The presence of family or supportive friends maybe. The security of a comfortable home perhaps. The love of God for sure.

Going forward let us pray for each other and the faith they need to face each new day. Let us support each other in whatever we are finding tricky or difficult to come to terms with.

Some words from James 1:17.

All good gifts come from the Father who loves us. His love for us never changes.

Lord God, Creator of the universe, maker of the planets, designer of our humanity.

As we are held safely in the palm of your hand, help us to recognise the security we have in you. Remind us of your love.

Let us give thanks for all the blessings that come from God. Amen.

Rev. Dominic Hubbuck

School Chaplain

Koinonia Federation Schools

Assistant Priest with East Greenwich Team Ministry



St Mary Magdalene C of E Primary School

Peninsula

Spring Term 2024 - Newsletter 1



Safeguarding

Safeguarding and keeping our children safe are very important to us. If you have any suggestion on how we can improve on our safety measures, please do speak with Mrs Savva-Brown.

If you have any concerns about any child's safety or child protection, please see **the school's Designated Safeguarding Lead – Mrs Ajayi ASAP**. If she is not available, please see Ms Williams **or** Ms Hoon **or** Mrs Savva-Brown.

There are photographs of the Safeguarding team placed in each classroom, please talk to your children and encourage them to talk to the adults in school if ever they need to.

For information on Safeguarding, please see the Greenwich's Safeguarding Children Partnership website <https://greenwichsafeguardingchildren.org.uk/>



ST. MARY MAGDALENE
C OF E SCHOOL

SAFEGUARDING

Are you concerned about the safety or welfare of a student or staff member?

If so, make sure you speak with a member of our safeguarding team.... Hoon



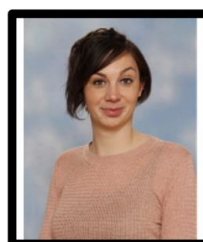
Mrs Ajayi Designated
Safeguarding Lead



Miss Williams Designated
Deputy Safeguarding Lead



Mrs Savva-Brown
Safeguarding Team



Miss Hoon Inclusion and
Safeguarding Team



Mrs Sheath
Safeguarding Governor

KEEPING CHILDREN SAFE

Greenwich MASH Line – 0208 921 3172



Greenwich LADO – Laura Lumbis

0208 921 3930 (Mobile 07896781040)

Childrens-LADO@royalgreenwich.gov.uk