

YEAR 6: MEET THE TEACHER

MRS MURILLO RODRIGUEZ- CLASS TEACHER

MRS RAHMAN/ MR MAIN – TEACHING ASSISTANT

MS MITTRA/ MS JONES– COVER TEACHER



CONTENTS:

- Attendance and punctuality
 - Year 6 timetable
 - Curriculum Map
 - Support at home
 - Extra curricular activities
 - Behaviour
 - Uniform
 - Healthy School
 - Keeping in touch
 - Suggested book lists/ websites/support
 - Any questions?
-



8:40AM: SCHOOL STARTS

The school gates open at 8.40am. We take the register at 8.55 and learning starts immediately after.

Registration closes at 8.55 am – Pupils will be marked **late** after this time.

It is important that your child isn't missing any learning time. Early Morning Work starts at 8.40am, children complete a range of activities in the classroom.

CLASS TIMETABLE

KS2 Timetable Aut – St Marys Magdalene

Day	8:40 - 9:00	9:00 - 10:00	10.00 - 10:15	10.20 - 10:45	10:45 - 11:00	11.00 - 12.00	12:00 - 13:00	13:00- 14:00	14:00- 15:00	15:05 - 15:10
Mon	EMW	English	Collective worship	DEAR TA to do RC group Rest reading	Break	Maths	Lunch	Science 14:00- 15:00	MFL	Story
Tue	EMW	Maths		DEAR Reading 1:1		English		RE 13:00- 14:15	Music 14:25- 15:10	Story
Wed	EMW	Maths		DEAR Reading Comp		English		History	DT	Story
Thu	EMW	English		DEAR Reading book		Maths		PE- Indoor	PSHE	Story
Fri	CW 9.00- 9.30	Maths		Spellings		English		PE- Outdoor	Computing	Story

Weekly allocation

Maths - 4hrs English 4hrs Science 1hr 15 mins RE 1hr 15 mins PE 2hrs Reading 1hr 20 mins reading
 (20mins a day) Story 50 mins (10mins a day) (History/Geography, Art/DT, Music, PSHE, Computing) 4hrs a wee
 TA – Supports from 9 to 3:20pm.

PE days are **Thursdays** and **Fridays** from this week until the end of term.

CURRICULUM MAP

Year 6	West Side Story	WW2	Medicine Through Time	Migration/People on the Edge	Climate Change	What the Dickens?
	<u>Core Text</u> Unheard Voices <u>History & Geography</u>	<u>Core text:</u> Good Night Mr Tom <u>History & Geography</u>	<u>Core text</u> <u>History</u>	<u>Core Text:</u> The Islander <u>Geography & History</u>	<u>Core Text</u> <u>Geography</u>	<u>Core Text:</u> David Copperfield <u>History</u>

	<p>Transatlantic Slave Trade Alliances between Caribbean countries and the UK in WW2. The Windrush</p> <p><u>Writing Outcomes:</u> Chronological Report Biography Performance Poem Persuasive Argument</p> <p><u>Science</u> All Living Things</p> <p><u>RE</u> RBG Unit 4 Belonging to the Sikh community (How do Sikhs feel they belong to a community?)</p> <p>SDBE – What does it mean to be a Sikh?)</p> <p><u>DT</u> All year groups to cover a DT unit this half term as a year group please decide the unit you will cover</p> <p><u>PSHE</u></p> <p>Belonging to a community Valuing diversity; challenging discrimination and stereotypes</p> <p><u>MUSIC</u> Charanga - SoW Year 6</p>	<p>World War 2 The Holocaust Changes in Britain since the 1930s</p> <p><u>Science</u> Electricity</p> <p><u>RE</u> RBG Unit 3 Islam - Ramadan and Eid al Fitr (Why do Muslims fast during Ramadan?) SDBE-How Would Christians Advertise Christmas To Show What Christmas mean today? (4)</p> <p><u>UC- Incarnation</u> How significant is it that Mary was Jesus' mother?</p> <p><u>Writing Outcomes</u> Biography Diary Entry Character Description</p> <p><u>ART</u> All year groups will cover a drawing unit in this half term (Further details from Art leaders)</p> <p><u>PSHE</u> Safe relationships Recognising and managing pressure; consent in different situations</p> <p>Respecting ourselves and others</p>	<p>Looking at contributions to Medicine throughout the time periods.</p> <p><u>Science</u> Animals including Humans</p> <p><u>RE</u> RBG Unit 4 Buddhism - The Buddhist Community worldwide</p> <p><u>Writing Outcomes</u> Extended Narrative -</p> <p><u>PSHE</u></p> <p>Media literacy and digital resilience Evaluating media sources; sharing things online</p> <p>Money and work influences and attitudes to money; money and financial risks</p> <p><u>TRIPS</u> The Old Operating Theatre</p>	<p>Refugees Link back to the people displaced due to the Tsunamis</p> <p><u>Science</u> Animals including Humans</p> <p><u>RE</u> SDBE – How Has The Christian Message Survived For Over 2000 Years?</p> <p><u>UC- Salvation</u> What difference does the resurrection make for Christians?</p> <p><u>Writing Outcomes:</u> Refugee Leaflet Monologue (own and as a character)</p> <p><u>PSHE</u></p> <p>Families and friendships Attraction to others; romantic relationships; civil partnership and marriage</p> <p><u>TRIPS</u></p>	<p>Plastics pollution Renewable and non-renewable energy</p> <p><u>Science</u> Light</p> <p><u>RE</u> RBG- End of Life's journey - comparison of all 6 faiths</p> <p>(SDBE – The journey of life and death)</p> <p><u>Writing Outcome:</u> Letter about plastic pollution Climate change documentary</p> <p><u>PSHE</u></p> <p>Physical health and mental wellbeing What affects mental health and ways to take care of it; managing change, loss and bereavement; managing time online</p> <p><u>TRIPS</u> Local trip</p>	<p>Charles Dickens Victorian Life Attitudes in Society Transition Unit</p> <p><u>Science</u> Light</p> <p><u>RE</u> RBG -Understanding Faith in Royal Greenwich RBG -Who am I?</p> <p>(SDBE – Understanding faith in...)</p> <p><u>Writing Outcomes:</u> Analytical essay</p> <p><u>PSHE</u> Growing and changing Human reproduction and birth; increasing independence; managing transition</p> <p>Keeping Safe Keeping Personal Information safe; regulations and choices; drug use and the law; drug use and the media</p> <p><u>TRIPS</u> Southwark Cathedral Leaver's service</p>
--	---	---	--	--	--	--

SUPPORT AT HOME

- **Reading**
- Please listen to you child read **every day**. Children will be asked to write a short overview of what they have read/ enjoyed etc in their reading journals. The journal also includes blank pages where your child can be creative - drawing pictures to match what they have read, make notes about vocabulary they have learnt etc
- Children's books will be changed as necessary.
- **Homework**
 - We will be giving children CGP books with example SAT style questions. I will set a certain number of pages per week and we will be able to go through the answers together. It is important that your child completes the pages set so that we can address any mistakes ASAP
 - Weekly spelling tests will take place every **Friday**

READING BOOKS



- Invested £20,000 on new reading books for the children to enjoy.
- If a book is not returned, or badly damaged, then you will be charged £6 to replace it.
- Please share the books with your child and encourage them to take care of our precious new resource.

PE

- Twice a week – indoor and outdoor
 - Thursdays and Fridays
- PE Kit
 - Indoor: Pumps, black shorts and white t-shirt
 - Outdoor: Trainers, shorts/ tracksuit bottoms, white t-shirt, jumper

EXTRA CURRICULAR ACTIVITIES

- School Journey – We will be going to Norfolk Lakes 4th-8th December
- School trips Examples of trips we may be having: Gurdwara, Museum of London, Imperial War Museum and hopefully more

If you are willing and available to help out on any of these trips, please let us know.

BEHAVIOUR AT ST MARY MAGDALENE

- It is important that children follow our golden rules. These are:
 - We are kind
 - We are honest
 - We work hard
 - We are gentle
 - We listen
 - We look after property
- **Rewards** – in class reward system.

UNIFORM

Clothing	Grey/black trousers or skirt or pinafore dress (other colours are not permitted); a white polo shirt/ blouse; / burgundy cardigan/ jumper In summer pupils may wear grey shorts or a red checked dress.
Footwear	Safe, flat sensible shoes or smart trainers – These must be black only
Jewellery	Small studs and a wrist watch if your child can tell the time. No necklaces.

HEALTHY PACKED LUNCH

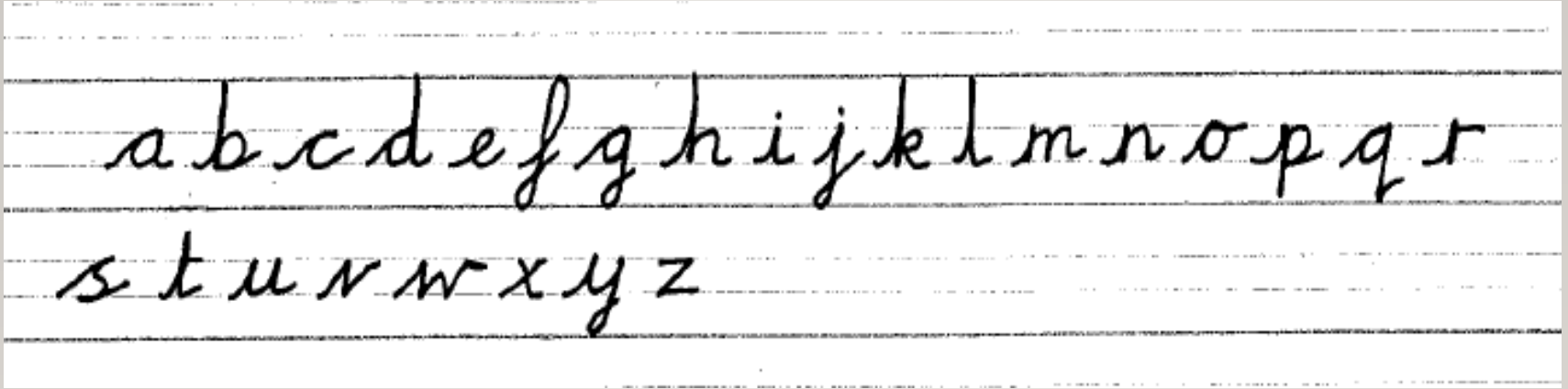
- Please ensure your child has a healthy balanced meal for lunch, e.g. sandwich, salad, rice etc.
- Make sure any snacks included in the packed lunch are healthy, for example, fruit, raisins, yoghurt, rice cakes.
- Drinks: water only
 - Every child should have a labelled water bottle in school
 - We continue to be a nut free school.

KEEPING IN TOUCH

Please check on our blog regularly, all classes at the school post on there and you can see what we are doing in class.

OUR SCHOOL HANDWRITING

- Joined cursive style, with lead-ins.



- Capital letters to remain separate and blocked

A B C D E F G H I J K L M N O P Q R S T U V

W X Y Z

SATS

- SATs will take place in the week beginning May 2024 (Date TBC).
- The children will sit the following tests:

Monday – Grammar, Punctuation and Spelling

Tuesday – Reading

Wednesday - Maths Arithmetic and Reasoning Paper 1

Thursday – Maths Reasoning Paper 2

Many thanks for coming – please ask if you have any other questions!



©EVERY-TUESDAY.COM