



ST. MARY MAGDALENE  
C OF E SCHOOL

# Reception welcome meeting 2022

# Class Teachers



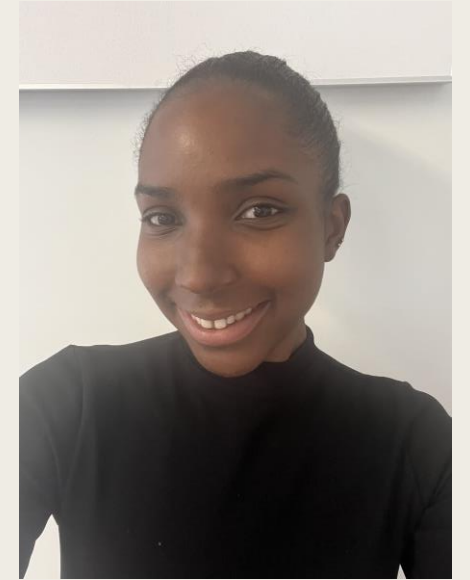
Miss Baptiste  
Orchard Class teacher



Miss Battey Bellamy Class  
teacher



Mrs Azevedo Orchard Class  
teaching assistant



Miss St. Marie Bellamy Class  
teaching assistant

Mrs Butterworth- reception  
cover teacher

# Attendance and punctuality

- Gates open at 8:40 am
- Gates close at 8:55 am
- Registration is taken at 8:55am
- child marked late in the register if later than this
- Children walk into class on their own from the gates, adults will be on hand to show them where to go



# Weekly timetable

Times	Monday	Tuesday	Wednesday	Thursday	Friday
<b>8:40 -8:55</b>	Wake up shake up/EMW	Wake up shake up/EMW	Wake up shake up/EMW	Wake up shake up/EMW	Wake up shake up/EMW
<b>8:55 –9.00</b>	<b>Registration</b>	<b>Registration</b>	<b>Registration</b>	<b>Registration</b>	<b>Registration</b>
<b>9:00-9:15</b>	Literacy Teaching	Maths	Creative	RE Teaching	Creative
<b>9:15-9.55</b>	Freeflow	Freeflow	Freeflow	Freeflow	Freeflow
<b>9.55-10:15</b>	Collective worship				
<b>10:15- 10:30</b>	Fruit and milk	Fruit and milk	Fruit and milk	Fruit and milk	Fruit and milk
<b>10:30 – 10:45</b>	Dough disco	Dough disco	singing	PSED	Dough disco
<b>10:45 – 11.00</b>	Playtime	Playtime	Playtime	Playtime	Playtime
<b>11:05-11:25</b>	LW Guided reading time			Phonics	
<b>11:25-11:45</b>	LW phonics teaching			freeflow	
<b>11:55- 1:00.pm</b>	Lunchtime	Lunchtime	Lunchtime	Lunchtime	Lunchtime
<b>1.00-1.05</b>	Registration	Registration	Registration	Registration	Registration
<b>1:05 – 1:10</b>	Maths mastery	Creative teaching	Maths mastery	Maths mastery	Maths mastery
<b>1:10- 2:00</b>	Freeflow and interventions	Freeflow and interventions	Freeflow and interventions	Freeflow and interventions	Freeflow and interventions
<b>2:00-2:30</b>	Outdoor PE -2pm-3pm	free flow Observations	free flow Observations	free flow Observations	2:00-3:00 indoor Leyla dance
<b>2:30-2:45</b>	Tidy up time	Tidy up time	Tidy up time	Tidy up time	Tidy up time
<b>2:45 – 3.10</b>	Storytime/song	Storytime/song	Storytime/song	Storytime/song	Storytime/song

# Curriculum maps

All About Me Black History Month	Lights & Celebrations	Super Scientist	Capes and Crowns	What's in our garden?	Journeys
<p><u>Text: Here we are, Owl Babies</u></p> <p>Families/local community vs. planet, animals</p> <p>Where do you live? How do we fit into a wider world? How are we different/unique?</p> <p>Retell the story using a story map</p> <p>Writing names</p> <p>Drawing <u>self portraits</u>, our families, pets</p> <p>T4W: Owl babies Story Map</p> <p><u>Visitors:</u> Reverent Dominic People who help us</p>	<p><u>Text: Non-fiction Guy Farkes/Diwali</u></p> <p>Making diva lamps</p> <p>Describing fireworks-crash, bang, pop etc. Remembrance Day -writing key facts</p> <p>T4W: <u>Instruction text:</u> How to make a diva lamp</p> <p><u>Writing a list:</u> Making a Christmas wish list</p> <p><u>Visitors:</u> Reverent Dominic</p>	<p><u>Scientific experiments</u></p> <p><u>Non-Fiction:</u> Making predictions- It will pop.</p> <p>Various <u>experiments</u> writing.</p> <p><u>Visitors:</u> Science experiments/Wiggly Wild Show</p>	<p><u>Text: Fiction Traditional tale: The Three Little Pigs/Supertato/Moana/Pocahontas/Mulan</u></p> <p>T4W: The three little pigs story map and writing of the story.</p> <p>I can describe my superhero</p> <p>Trip: Woodland farm: The Three Little Pigs Literacy trip + Koinonia Ball for all campuses</p>	<p><u>The Tiny Seed/What the ladybird heard song by Julia Donaldson</u></p> <p><u>Fact text:</u> Labelling a flower Butterfly rap song Minibeast <u>factfile</u></p> <p><u>Recount:</u> Trip recount Animal/ Insects description</p> <p>Trip: Ecology Park/ <u>Hornimans</u>/Maryon Wilson/ Wiggly Wild Show</p>	<p><u>The Naughty Bus/The journey from Gandra's house song/The snail and the whale</u></p> <p><u>Makins Lists:</u> Types of transport</p> <p>Transport <u>survey</u></p> <p>Rhymes: Up, Up, <u>Up!</u> Barefoot Books Singalong The snail and the whale</p> <p><u>Trip:</u> Cable cars/End of year trip to the park</p>

# Phonics

- We follow the Little Wandle phonics scheme in EYFS and this is carried on into key stage 1.
- Little Wandle follows a systematic approach to teaching children sounds that give them the skills to decode words for reading.
- Little Wandle is a government validated scheme.
- Children are taught sounds in phases and these are applied to our reading practice sessions, which happen 3 times a week guided by an teacher.

Reading is so important, especially in the younger years. It will help them with all areas of their learning as they progress through the school. Please help share a love of reading with your child by reading to them as often as possible.



# Writing

- In reception, children are taught how to write in print/block script. This is to ensure correct letter formation, before focusing on refining their handwriting with cursive when they start KS1.
- All lower case letters start on the line. This helps them to remember where to start each letter.
- We do a daily dough disco this helps to strengthen the hand muscles needed to write, along with other fine motor activities.
- We teach children to hold their pencils using a tripod grip:



# Assessment

- Reception Baseline Assessment- Government requirement across the UK (Literacy and Maths only)
- Phonics assessments(every 6 weeks)
- End of year assessments- against the early years standards.





# Tapestry

- We will use Tapestry online journey to celebrate your child's achievements and exciting activities, individually or with their new friends and the staff looking after them.
- You can contribute to this online journal by commenting on the journal entries, or even adding your own. Let your child's teachers know what your child loves doing at home by sending photos and videos back, helping them understand their development at home.
- You can share these special moments with your child at any time by logging into their Learning Journal, using your own password. This online journal will help to develop your child's language skills and build their self-esteem.



# Behavior in school

- **A New Day, A Fresh Start**
- Positive behaviors is rewarded with 'Class Dojo's
- Stickers
- House points
- Head teacher's Award
- Maths Award
- Value certificate (value changes every term, this term's value is fellowship)

## Golden rules

- We work hard.
- We are kind and helpful.
- We look after property.
- We are honest.
- We listen to people.
- We are gentle.



# Homework

Homework menus	Weekly work & LW phonics activities	Online education
<ul style="list-style-type: none"> <li>Given every half term.</li> <li>Aim to Complete 3 or more activities.</li> <li>Homework books are checked on your child's book change day.</li> <li>For each activity completed you will be given 10 house points. Please put a tick beside each homework activity you have completed</li> </ul>	<p>Please support your child by encourage them to practice writing their name, and forming their numbers to ten on a weekly basis. This will reinforce what we are teaching in class.</p> <p>Weekly Little Wandle phonics homework will be sent out on a Friday and collected the following Friday. Each week the phonics homework will match what your child has learnt in school that week.</p> <p><u>Reading-</u> Please read with your child at least 3 times a week. Your child will take home one book from school, as well as allocated a weekly phonics book on our e-book system, which supports what they have read in school that week.</p>	<p>Every child will be given a Purple Mash and education city log in. These websites have lots of educational games to support your child's education.</p>



Please make sure your reading record is signed and commented so that we can regularly change your child's book. If there is no comment, we will assume you haven't read it yet.



# PE Days

Children will have 2 PE sessions per week.

On Fridays, Reception have a dance and fitness teacher, Miss Leyla.

They are requested to bring their PE kits to school on a Monday and take them home to wash on a Friday.  
PE kits including the clothing need to be clearly labelled with your child's name.

They will need to get undressed and dressed independently for PE so please allow them time to practise at home.



Indoor PE Kit:  
T-shirt  
Shorts

Orchard	Bellamy
Outdoor- Monday Indoor (dance & fitness):Friday	Outdoor-Thursday Indoor (dance and fitness):Friday

Outdoor PE Kit:  
Jumper  
Jogging Bottoms



# Clothes and labelling

Please ensure that you label all your child's belongings clearly with their name, including:

- Shoes
- Coats
- School bags
- Water bottles
- PE kits
- Scarves and gloves.

We cannot guarantee that your child will not take off their coat, cardigan or jumper when playing in the playground at playtime or lunchtime.



# Getting dressed

It is very useful if your child can dress and undress themselves when they join the school.

We do not require the majority of 4 year olds to be able to tie their own laces and do their buttons, but we do encourage them to try.



If you want your child to have laced shoes, then they need to be able to tie them themselves.

Velcro fastening shoes and slip on pumps can be less frustrating for both child and teacher in the early stages.

Belts can make it difficult for your child to undress themselves in a hurry.



# Lunches/ packed lunches

All children in Reception are entitled to a free school meal.

Alternatively, your child may bring a healthy packed lunch. Sweets, chocolate bars and fizzy drinks are not allowed.

Your child will receive fresh fruit every day which is free of charge.



We encourage children to keep hydrated throughout the day. Please ensure your child has a labelled bottle containing **water** only.



# Parent teacher communication

If you would like to speak to us, please write in your child's contact book. They will be checked weekly on your child's book changing day.

If it is something you would like us to read on a particular day, please ask your child to hand their contact book to one of us in the morning on their way into class

Alternatively, you can call the school office.

If the matter is urgent, please speak to a member of Senior Leadership Team.

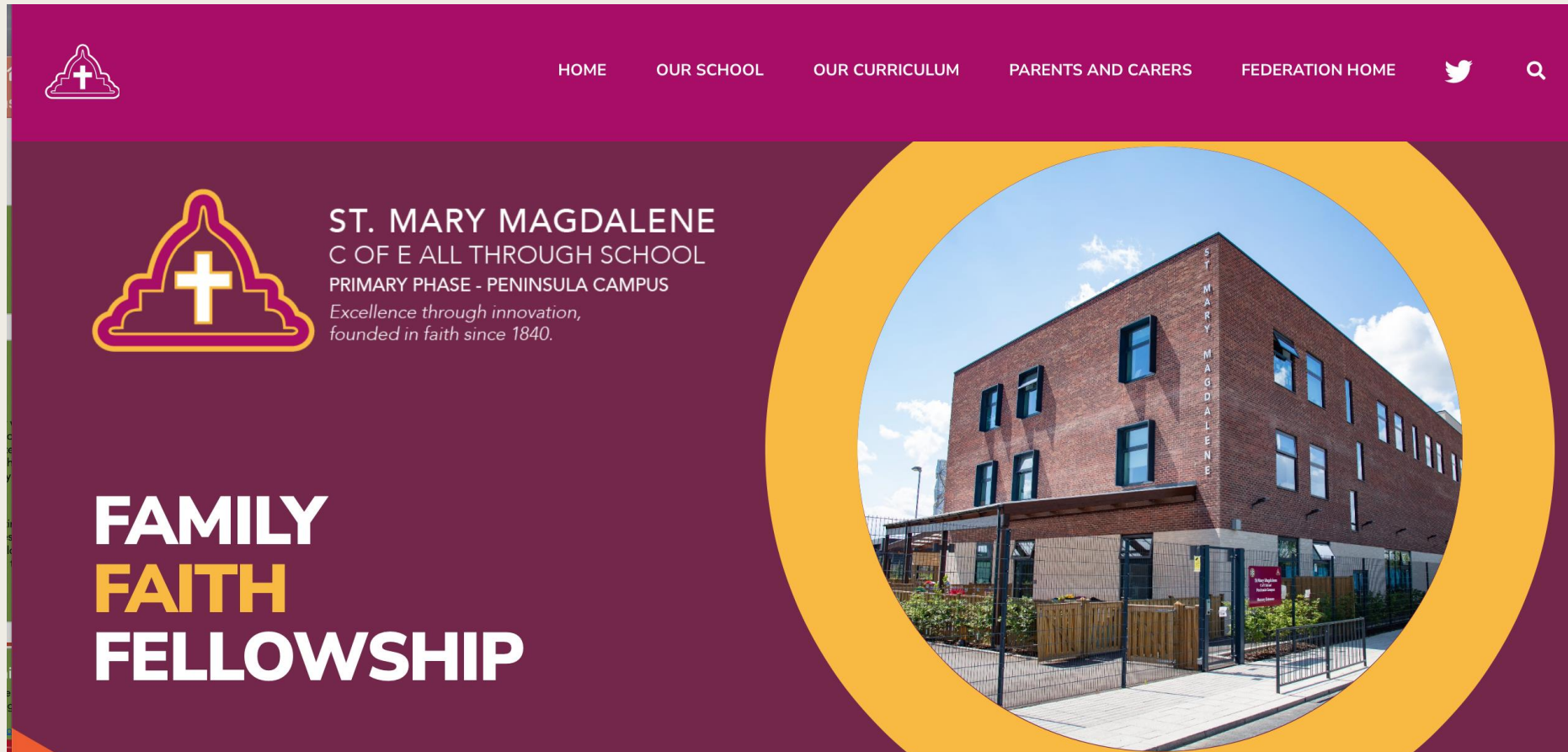




# School website

Please visit the Koinonia Federation Website for more information regarding your child's learning.

<https://www.koinoniafederation.com/>



# Question time



## Thank for your time

We are excited to provide you and your child with the support needed to ensure the best start in their education.

